

# ASSEMBLY INSTRUCTIONS

## **8100 SERIES TRACK**

### ***Pinch Pleated Draperies Configured as a Panel***

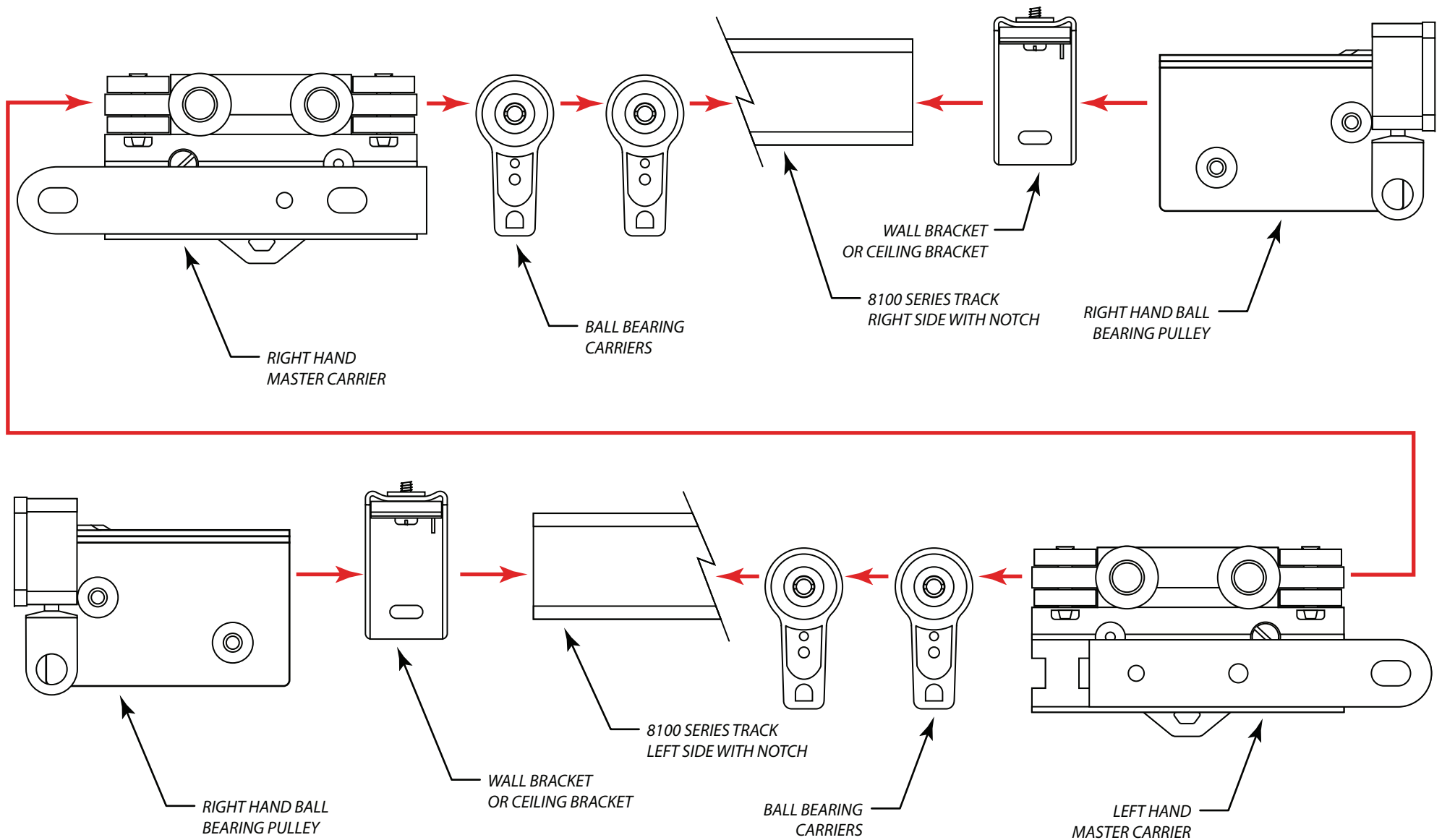
Cut track to length and notch the desired cord draw side to allow for the ball bearing pulley end. Insert ball bearing pulley in the notched end. On the other end of the track, insert the carriers, the master carrier, and finally the one-way draw pulley to cap the end. Refer to the Cord Assembly diagrams and install the draw cord accordingly. Next, attach the wall mount track bracket or ceiling clip to the top of the track, leaving 24" to 36" between each one. Once all of the wall brackets or ceiling clips are installed hold the entire track system up to the wall/ceiling and mark the holes you need to drill. Remove wall brackets/ceiling clips from the track and attach them to the wall/ceiling. Once the brackets/clips are properly mounted, re-attach the track to the brackets/clips. Hang drapery and check to ensure smooth operation.


For smoother operation, lightly spray the inside of the track with an aerosol silicone lubricant. Depending upon environment, clean and re-lubricate as necessary.

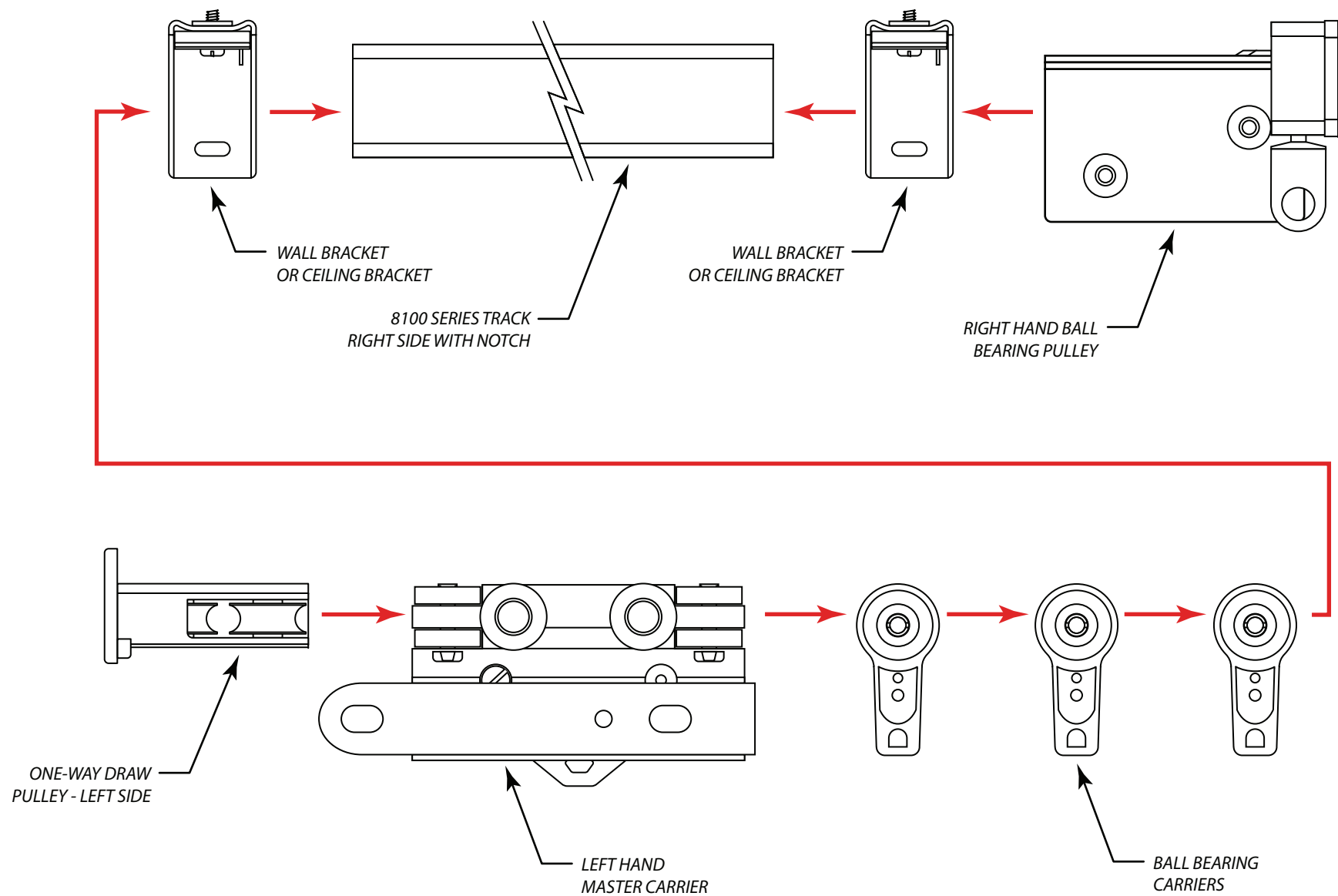
### ***Pinch Pleated Draperies Configured as a Pair***


Cut track to length and notch both ends of the track. Insert ball bearing pulley in one end. On the other end of the track, insert half of the carriers, the master carriers, the second half of the carriers, and finally the ball bearing pulley to cap the end. Refer to the Cord Assembly diagrams and install the draw cord accordingly. Next, attach the wall mount track bracket or ceiling clip to the top of the track, leaving 24" to 36" between each one. Once all of the wall brackets or ceiling clips are installed hold the entire track system up to the wall/ceiling and mark the holes you need to drill. Remove wall brackets/ceiling clips from the track and attach them to the wall/ceiling. Once the brackets/clips are properly mounted, re-attach the track to the brackets/clips. Hang drapery and check to ensure smooth operation.

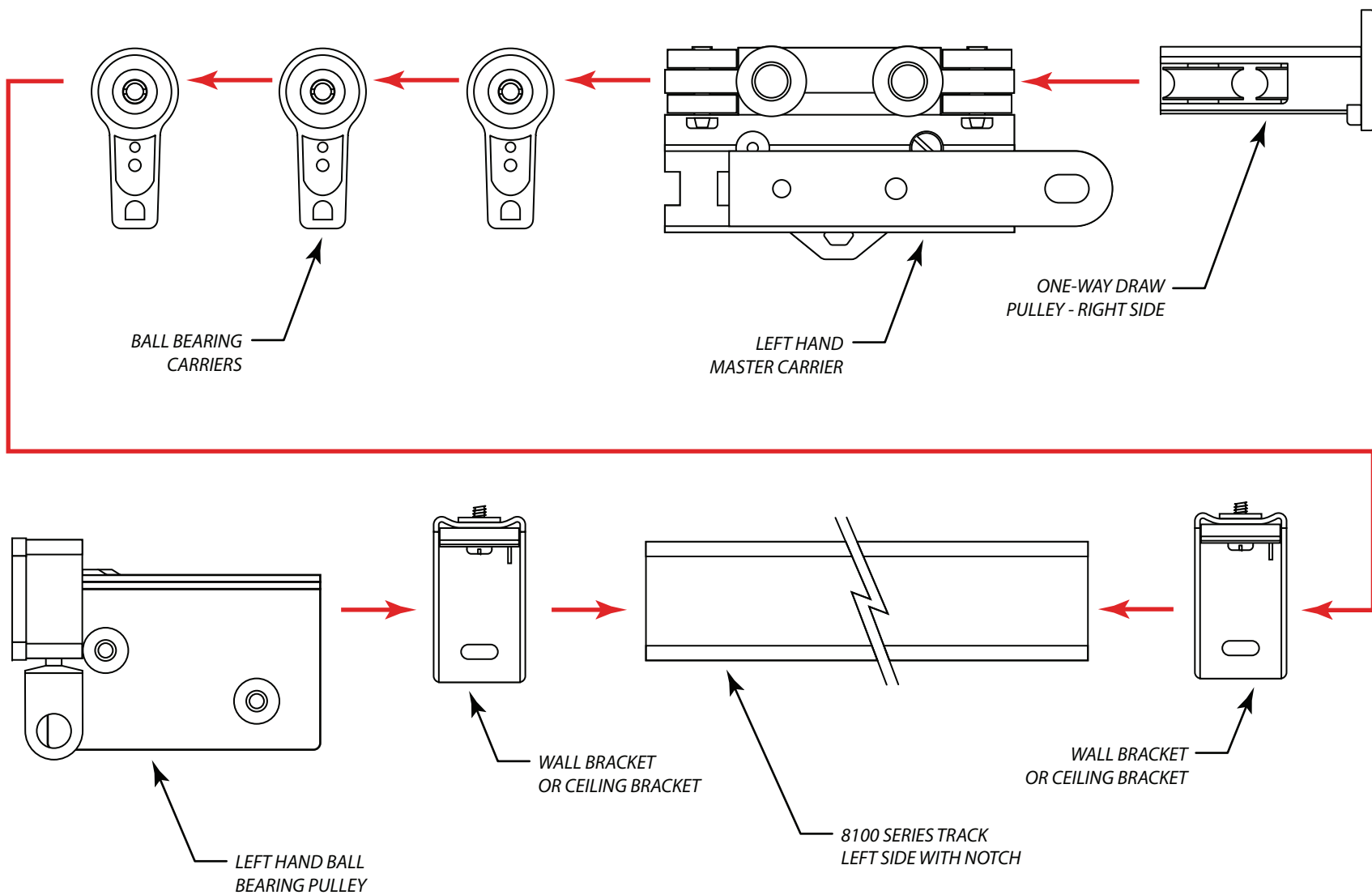
For smoother operation, lightly spray the inside of the track with an aerosol silicone lubricant. Depending upon environment, clean and re-lubricate as necessary.



<b>CONFIDENTIAL</b> All materials disclosed in this document are proprietary to Diamond Drapery Co., Inc. The Holder agrees to maintain it in confidence and must not replicate or reveal this information in any manner.	<b>Project:</b> 8100 Series Drapery Tracking System Pinch Pleat, Pair		 7439 Lampson Avenue Garden Grove, CA 92841 (714) 761-4543 OFFICE (714) 761-4623 FAX
	<b>Date:</b> 22-DEC-2008	<b>Dimensions:</b> Inches/Feet	
	<b>Scale:</b> DO NOT SCALE	<b>By:</b> C. Johnson	



<b>CONFIDENTIAL</b> All materials disclosed in this document are proprietary to Diamond Drapery Co., Inc. The Holder agrees to maintain it in confidence and must not replicate or reveal this information in any manner.	<b>Project:</b> 8100 Series Drapery Tracking System Pinch Pleat, Right Hand Panel		  7439 Lampson Avenue Garden Grove, CA 92841 (714) 761-4543 OFFICE (714) 761-4623 FAX
	<b>Date:</b> 22-DEC-2008	<b>Dimensions:</b> Inches/Feet	
	<b>Scale:</b> DO NOT SCALE	<b>By:</b> C. Johnson	



**CONFIDENTIAL**

All materials disclosed in this document are proprietary to Diamond Drapery Co., Inc. The Holder agrees to maintain it in confidence and must not replicate or reveal this information in any manner.

**Project:** 8100 Series Drapery Tracking System  
Pinch Pleat, Left Hand Panel

**Date:** 22-DEC-2008

**Scale:** DO NOT SCALE

**Dimensions:** Inches/Feet

**By:** C. Johnson

