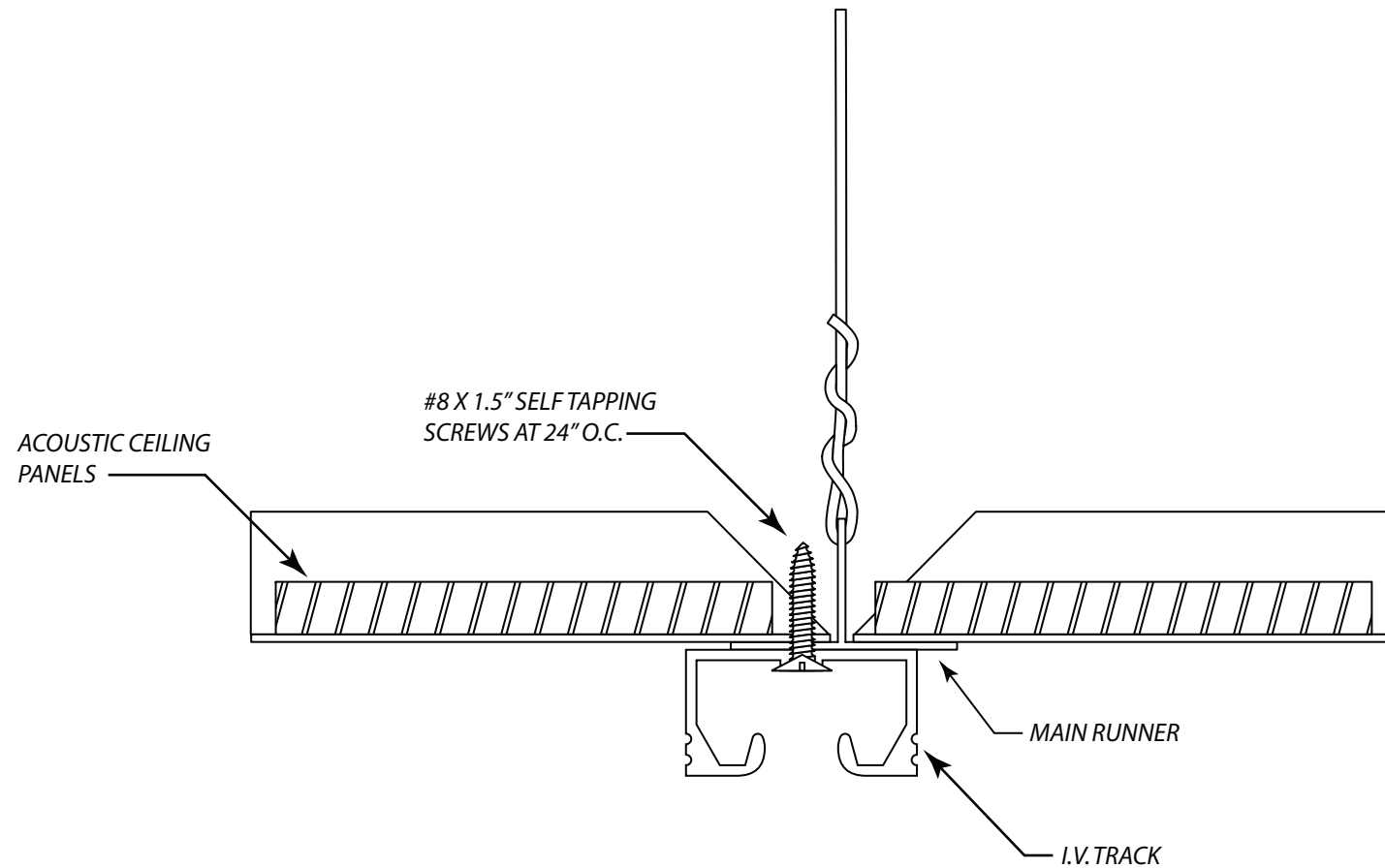


I.V. TRACKING INSTALLATION INSTRUCTIONS

7000 SERIES – DROP CEILING GRID INSTALLATION

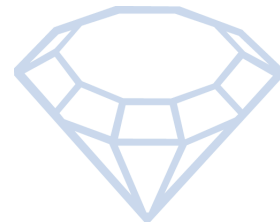
The tools and materials that are required to install cubicle and I.V. track will vary depending upon the ceiling type. Diamond Drapery does not provide the fasteners or the tools that are required to install cubicle and I.V. track. Diamond Drapery does not assume liability on any installation method. The techniques listed here are merely industry recommendations.

1. Place the privacy track on the floor. Lay out the configurations to ensure that the track is positioned exactly where it is desired.
2. Begin on one end of the track; and mark the holes on the ceiling. Repeat this process on the track as well. Note: track should be secured at 24"- 30" intervals beginning on one end of the track. I.V. track should be secured at 16" intervals.
3. Decide which end of the track will receive the end stop with pull-out.
4. Pre-drill the track. Anchor track via a 2" #8 self tapping screw hex head or pan head recommended. Track will be anchored directly to the drop ceiling grid. Note: 7000 Series track must be pre-drilled with a counter sinking bit to ensure that the fastener will be flush mounted.
5. If the track is spliced, check to ensure that there are no obstructions. Then place the track splice over one end of the track and secure via the steps listed above. Slide the other side of the track into the splice and secure with a fastener. This will ensure that the carriers will not bind at this location.
6. Make sure that both ends of the tracks and the end stops are secured to the ceiling.
7. Remove the pull-out and place the desired number of carriers on the track.



CONFIDENTIAL All materials disclosed in this document are proprietary to Diamond Drapery Co., Inc. The Holder agrees to maintain it in confidence and must not replicate or reveal this information in any manner.	Project: 7000 Series I.V.Tracking System Drop Ceiling Installation	
	Date: 24-MAR-2009	Dimensions: Inches/Feet
	Scale: DO NOT SCALE	By: C. Johnson



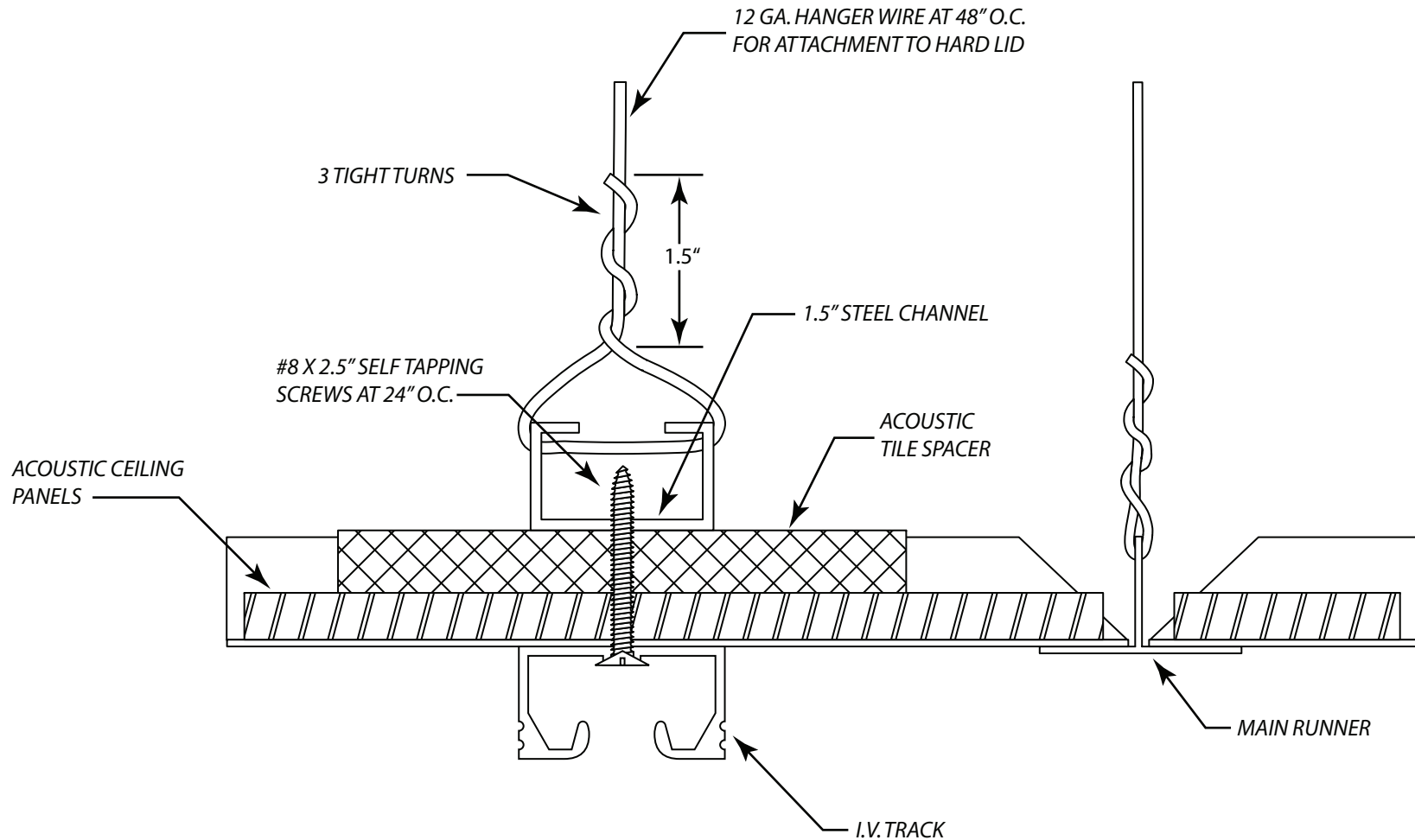


I.V. TRACKING INSTALLATION INSTRUCTIONS

7000 SERIES – DROP CEILING GRID WITH CHANNEL BACKING INSTALLATION

The tools and materials that are required to install cubicle and I.V. track will vary depending upon the ceiling type. Diamond Drapery does not provide the fasteners or the tools that are required to install cubicle and I.V. track. Diamond Drapery does not assume liability on any installation method. The techniques listed here are merely industry recommendations.

1. Place the privacy track on the floor. Lay out the configurations to ensure that the track is positioned exactly where it is desired.
2. Begin on one end of the track; and mark the holes on the ceiling. Repeat this process on the track as well. Note: track should be secured at 24" on center intervals beginning on one end of the track.
3. Decide which end of the track will receive the end stop with pull-out.
4. Pre-drill the track. Note: 7000 Series track must be pre-drilled with a counter sinking bit to ensure that the fastener will be flush mounted.
5. Decide where the 1 ½" channel will be laid flat directly above the track.
6. Attach 12 gauge hangar wires at 48" intervals on center.
7. Secure hangar wire to the 1 ½" channel backing with three tight turns. Turns should be completed within 1 ½".
8. Anchor track via a 2 ½" #8 self tapping screw hex head or pan head recommended. Track will be anchored directly to the 1 ½" channel. Track must be secured at 24" intervals on center to the 1 ½" channel.
9. If the track is spliced, check to ensure that there are no obstructions. Then place the track splice over one end of the track and secure via the steps listed above. Slide the other side of the track into the splice and secure with a fastener. This will ensure that the carriers will not bind at this location.
10. Make sure that both ends of the tracks and the end stops are secured to the ceiling.
11. Remove the pull-out and place the desired number of carriers on the track.



CONFIDENTIAL

All materials disclosed in this document are proprietary to Diamond Drapery Co., Inc. The Holder agrees to maintain it in confidence and must not replicate or reveal this information in any manner.

Project:
7000 Series I.V. Tracking System
Drop Ceiling with Backing Installation

Date:
24-MAR-2009

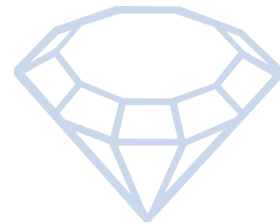
Dimensions:
Inches/Feet

Scale:
DO NOT SCALE

By:
C. Johnson



7439 Lampson Avenue
Garden Grove, CA 92841
(714) 761-4543 OFFICE (714) 761-4623 FAX

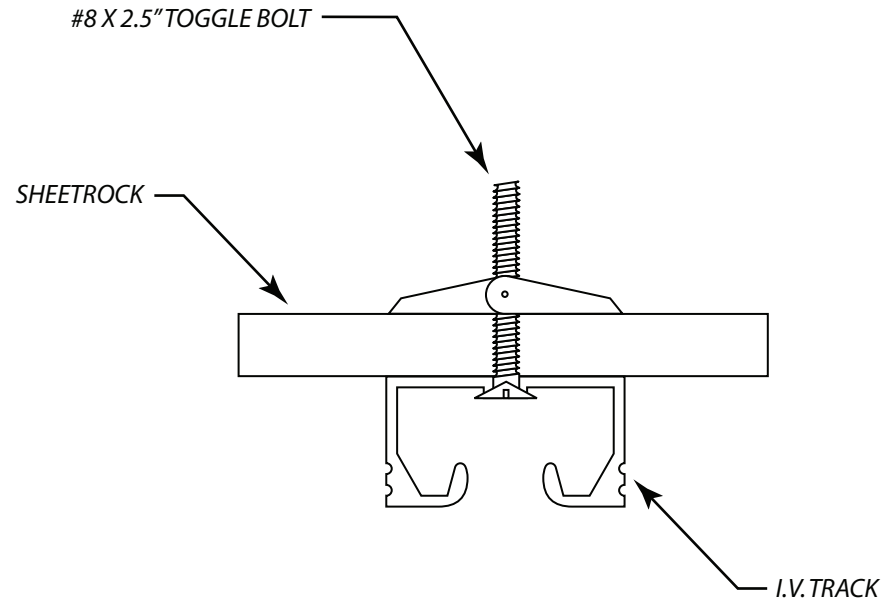


I.V. TRACKING INSTALLATION INSTRUCTIONS

7000 SERIES – SHEETROCK (DRYWALL) INSTALLATION

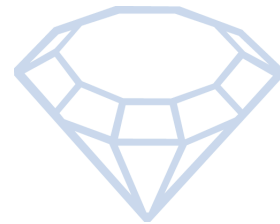
The tools and materials that are required to install cubicle and I.V. track will vary depending upon the ceiling type. Diamond Drapery does not provide the fasteners or the tools that are required to install cubicle and I.V. track. Diamond Drapery does not assume liability on any installation method. The techniques listed here are merely industry recommendations.

1. Place the privacy track on the floor. Lay out the configurations to ensure that the track is positioned exactly where it is desired.
2. Begin on one end of the track; and mark the holes on the ceiling. Repeat this process on the track as well. Note: track should be secured at 24"- 30" intervals beginning on one end of the track. I.V. track should be secured at 16" intervals.
3. Decide which end of the track will receive the end stop with pull-out.
4. Pre-drill the ceiling.
5. Pre-drill the track. Anchor track via a 3" hex head bolt and wings. Toggle will be 1/8" in diameter. Slotted hex head or Robertson head is recommended. Note: 7000 Series track must be pre-drilled with a counter sinking bit to ensure that the fastener will be flush mounted.
6. If the track is spliced, check to ensure that there are no obstructions. Then place the track splice over one end of the track and secure via the steps listed above. Slide the other side of the track into the splice and secure with a fastener. This will ensure that the carriers will not bind at this location.
7. Make sure that both ends of the tracks and the end stops are secured to the ceiling.
8. Remove the pull-out and place the desired number of carriers on the track.



CONFIDENTIAL All materials disclosed in this document are proprietary to Diamond Drapery Co., Inc. The Holder agrees to maintain it in confidence and must not replicate or reveal this information in any manner.	Project: 7000 Series I.V.Tracking System Sheetrock Installation	
	Date: 24-MAR-2009	Dimensions: Inches/Feet
	Scale: DO NOT SCALE	By: C. Johnson



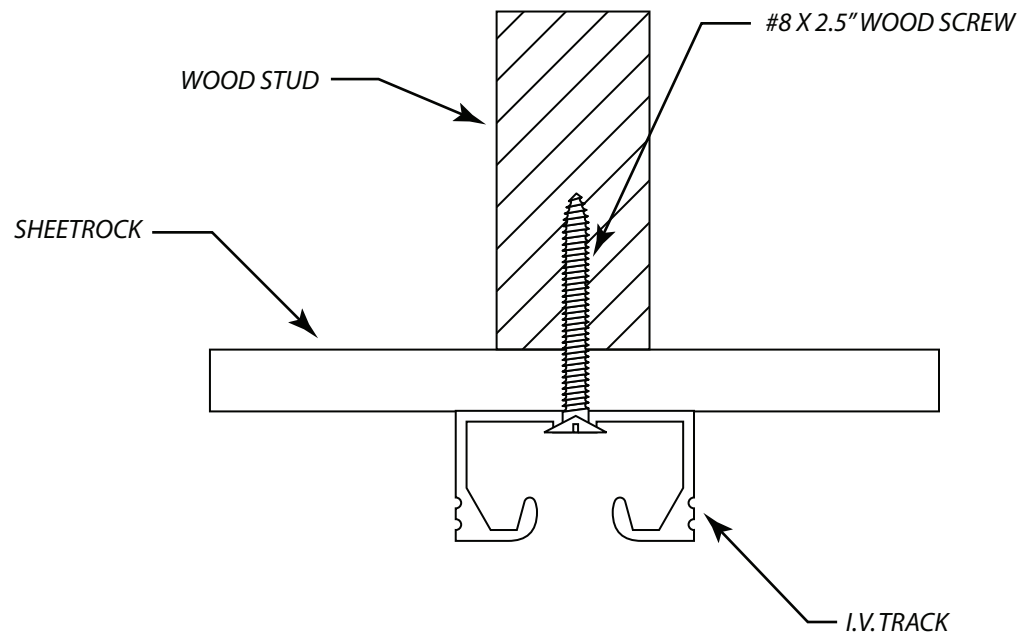


I.V. TRACKING INSTALLATION INSTRUCTIONS

7000 SERIES – WOOD INSTALLATION

The tools and materials that are required to install cubicle and I.V. track will vary depending upon the ceiling type. Diamond Drapery does not provide the fasteners or the tools that are required to install cubicle and I.V. track. Diamond Drapery does not assume liability on any installation method. The techniques listed here are merely industry recommendations.

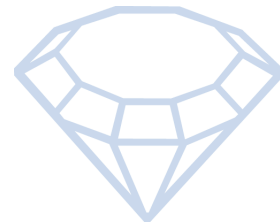
1. Place the privacy track on the floor. Lay out the configurations to ensure that the track is positioned exactly where it is desired.
2. Begin on one end of the track; and mark the holes on the ceiling. Repeat this process on the track as well. Note: track should be secured at 24"- 30" intervals beginning on one end of the track. I.V. track should be secured at 16" intervals.
3. Pre-drill the track. Anchor track via a 2" #8 self tapping screw hex head or pan head recommended. Track will be anchored directly to the drop ceiling grid. Note: 7000 Series track must be pre-drilled with a counter sinking bit to ensure that the fastener will be flush mounted.
4. If the track is spliced, check to ensure that there are no obstructions. Then place the track splice over one end of the track and secure via the steps listed above. Slide the other side of the track into the splice and secure with a fastener. This will ensure that the carriers will not bind at this location.
5. Make sure that both ends of the tracks and the end stops are secured to the ceiling.
6. Remove the pull-out and place the desired number of carriers on the track.



CONFIDENTIAL All materials disclosed in this document are proprietary to Diamond Drapery Co., Inc. The Holder agrees to maintain it in confidence and must not replicate or reveal this information in any manner.	Project: 7000 Series I.V.Tracking System Wood Stud Installation	
	Date: 24-MAR-2009	Dimensions: Inches/Feet
	Scale: DO NOT SCALE	By: C. Johnson



7439 Lampson Avenue
Garden Grove, CA 92841
(714) 761-4543 OFFICE (714) 761-4623 FAX



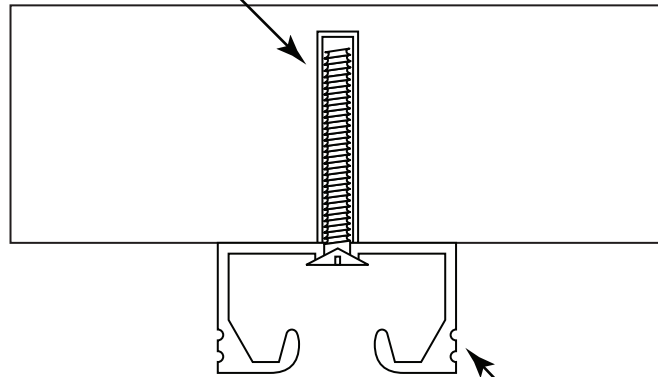
I.V. TRACKING INSTALLATION INSTRUCTIONS

7000 SERIES – CONCRETE INSTALLATION

The tools and materials that are required to install cubicle and I.V. track will vary depending upon the ceiling type. Diamond Drapery does not provide the fasteners or the tools that are required to install cubicle and I.V. track. Diamond Drapery does not assume liability on any installation method. The techniques listed here are merely industry recommendations.

1. Place the privacy track on the floor. Lay out the configurations to ensure that the track is positioned exactly where it is desired.
2. Begin on one end of the track; and mark the holes on the ceiling. Repeat this process on the track as well. Note: track should be secured at 24"- 30" intervals beginning on one end of the track. I.V. track should be secured at 16" intervals.
3. Decide which end of the track will receive the end stop with pull-out.
4. Pre-drill the ceiling. Insert a 1 ¼" concrete anchor.
5. Pre-drill the track. Anchor track via a 1 ¼" #8 self tapping screw hex head or pan head recommended. Note: 7000 Series track must be pre-drilled with a counter sinking bit to ensure that the fastener will be flush mounted.
6. If the track is spliced, check to ensure that there are no obstructions. Then place the track splice over one end of the track and secure via the steps listed above. Slide the other side of the track into the splice and secure with a fastener. This will ensure that the carriers will not bind at this location.
7. Make sure that both ends of the tracks and the end stops are secured to the ceiling.
8. Remove the pull-out and place the desired number of carriers on the track.

CONCRETE ANCHOR



I.V. TRACK

CONFIDENTIAL All materials disclosed in this document are proprietary to Diamond Drapery Co., Inc. The Holder agrees to maintain it in confidence and must not replicate or reveal this information in any manner.	Project: 7000 Series I.V.Tracking System Concrete Installation	
	Date: 24-MAR-2009	Dimensions: Inches/Feet
	Scale: DO NOT SCALE	By: C. Johnson



7439 Lampson Avenue
Garden Grove, CA 92841
(714) 761-4543 OFFICE (714) 761-4623 FAX